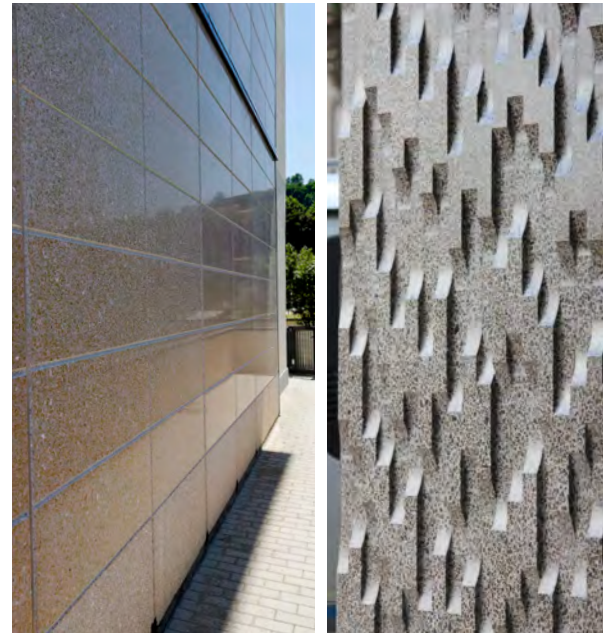


SOCOMAP

MACHINES AND AUTOMATIONS FOR THE
PRE-FABRICATED INDUSTRIAL SECTOR



CNP 741

A VERSATILE FINISHING CONTROL CENTER FOR PRECAST WALLS

Achieve the highly desirable look of polished concrete and granite with Socomap. Design panels with a polished or textured architectural face that includes the ability to grind in rustication features, engravings and more. Water is used during this process to eliminate silica dust. Socomap is the only machine of its kind to do these treatments vertically and Nox-Crete is the exclusive North American representative.



chemical solutions to [concrete](#) problems
North American Representative

ACHIEVE THE HIGHLY DESIRABLE LOOK OF POLISHED CONCRETE AND GRANITE WITH SOCOMAP!

Socomap Machine Features:

- Composed of a self-propelled oblique frame running onto rails equipped with functional attachments.
- Automatically detects the size of the panels, doors and windows, during the honing/bush hammering process and therefore no data from the operator is necessary.
- The combined processes, honing + bush hammered stripes delimited by false

- joints, can be programmed directly onto the machine and are visualized on video.
- Can be programmed by an outside PC with an AutoCAD system.
- All metal parts exposed to wear-and-tear/water are made of stainless steel or are sand-blasted and coated with polyurethane double-component protective paints.
- Furnished with an automatic greasing system for moving parts.

- Spindles run on 15 kW motors. Motor for inside edge engraving by candle-shaped tools is 2200 watt. Motor is equipped with inverter in order to reach 5000 rpm.
- Solenoid valves on each spindle control water use and only open when in use to save on water usage.
- Fixed post walls are installed parallel to the rails for machine to treat multiple panels in each run operation.

Spindle Head Features:

- Spindle heads for honing and bush hammering equipped with pneumatic lifting function.
- Spindle heads for engraving with stripes and false joints are equipped with

- electromechanical side shifting, height display and electromechanical up-down movement. These heads follow the surface cambers, if there are any, by a distance sensor.
- One of the heads of the bridge features

a rotating function, therefore engraving with diagonal stripes and false joints can be implemented to achieve all possible designs.



Model CNP 741

A bridge vertically slides on this structure and carries:

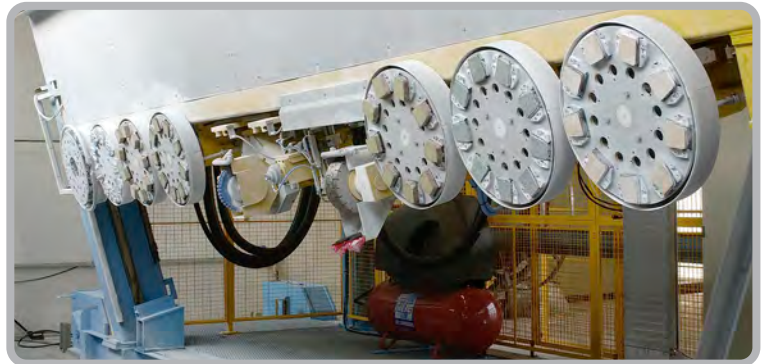
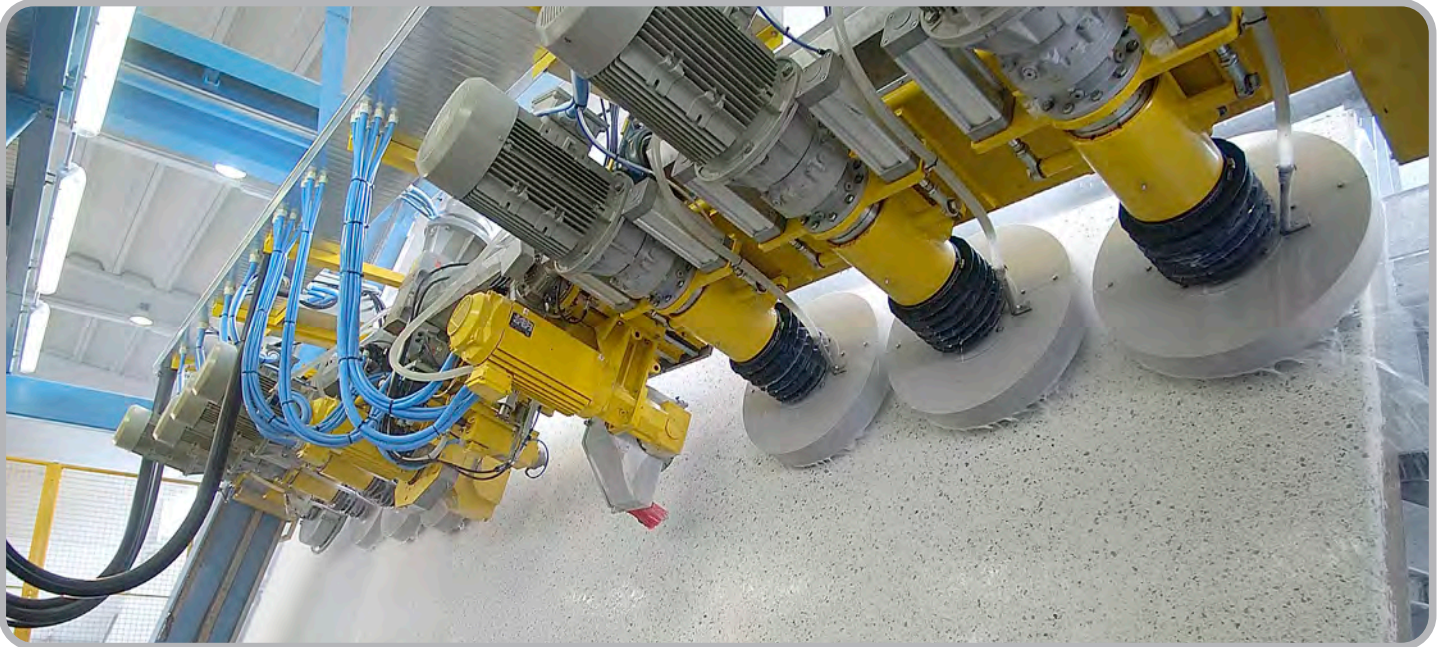
- 7 spindles for polishing, brushing and bush hammering
- 1 vertical-axe spindle for inside edge engraving
- 2 spindles for engraving with vertical stripes and false joints

A second bridge mounted on the side of the structure carries two spindles for engraving with horizontal strips and false joints

What capabilities can Socomap add to your operation?

- Polishing
- Grooving
- False Joints & Rustication Features
- Brushing
- Sanding
- Bush Hammering
- Engraving
- Honing
- Oblique Grooves & Much More!

Easily program this intelligent machine to perform a combination of processes like honing and bush hammered stripes delimited by false joints and view simulated results on video before you begin.



Available option - Coverings for outdoor installation.

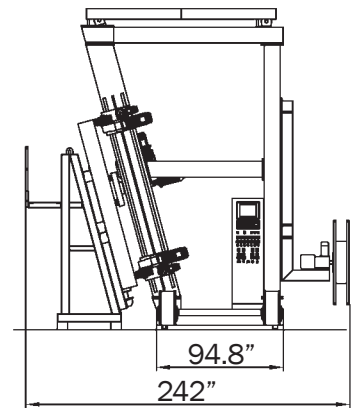
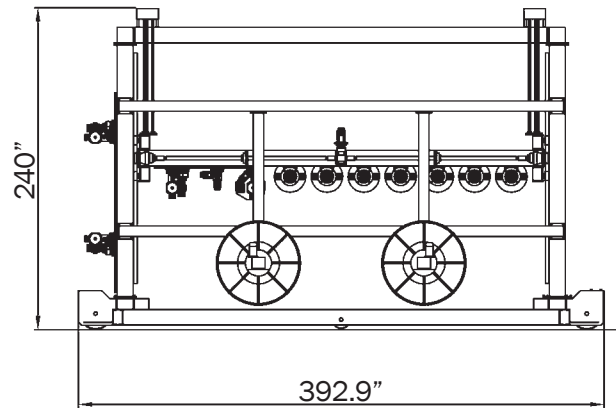




247.2"

242"

MOD. CNP 741



chemical solutions to concrete problems

North American Representative

Expand your Finishing Capabilities!

402-341-2080

www.nox-crete.com