

A New Forming System from Nox-Crete

A complete reusable precast formwork system



- 1 Titan™ Magnet Clamp
- 2 Spartan™ Sideform
- 3 Spartan™ Sideform Capping
- 4 Spartan™ Rubber Base Insert
- 5 Spartan™ End Caps
- 6 Spartan™ Joiner Plates
- 7 Spartan™ Internal Corner System

Smarter. Easier. Lightweight. Reusable. Safer.

Central to your SRB Systems is the Titan™ Magnet Clamp and Spartan™ Sideform. Together, these products provide unparalleled levels of accuracy, flexibility, efficiency and safety to precast plants.

nox-crete®

chemical solutions to concrete problems

North American Distributor

402-341-2080 | www.nox-crete.com

1 Titan™ Magnet Clamp

MAGNET FEATURES



Adjustable Handle

- Can be adjusted into 3 positions; engaged, semi-engaged and disengaged

Plastic Body

- Rubber and plastic housing greatly reduce movement from vibration
- Glass reinforced plastic adds strength and makes concrete hard to adhere to
- Alkalinity in concrete doesn't affect plastic

Rubber Skirt

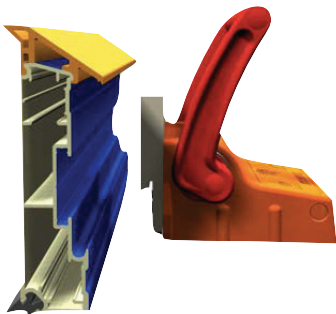
- Creates a barrier between the magnet and dirt, metallic particles and other foreign magnetic material
- Increases base friction forces holding the magnet in place

Don't Discard...Repair

Titan Magnet Replacement Parts are Available

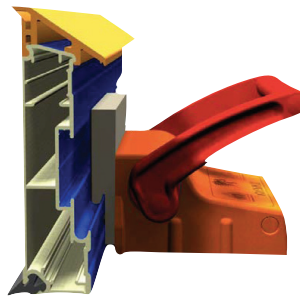
- Rubber Skirts
- Plastic Bodies
- Adjustable Handles

PULL DOWN FORCE	3968 lbs.
SHEAR FORCE LOAD	895 lbs. to 1,054 lbs.
UNIT WEIGHT	9.8 lbs.
DIMENSIONS	5.1" D x 5.9" W x 3" H



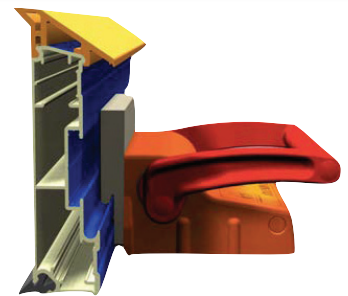
Disengaged

Under the plastic housing the magnet is tilted away from the steel bed. Magnets can be moved on metallic surfaces and set in place with ease.



Semi-Engaged

The magnet is nearly flat and flush with the base of the rubber skirt. Magnet holds its position but can be moved to its precise position along the sideform prior to pour without the use of a hammer or mallet.



Fully Engaged

The magnet is in full contact with the steel forming bed. The full force of the SRB Titan™ is in affect and will not move until the handle is adjusted to the semi-engaged or disengaged position.

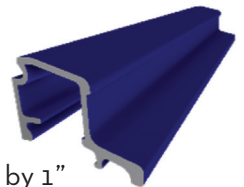


SIDEFORMS AVAILABLE IN 6", 8", 10" & 12" HEIGHTS

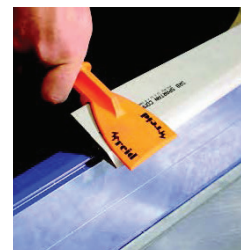
With a wide variety of sideform heights, precast facilities have the versatility of providing the exact thickness their customers require.

Spartan™ 1" Aluminum Sideform Extensions

- Increase Spartan Sideform heights by 1" making all heights available from 6" to 14" in 1/2" increments
- Aluminium Extension snaps onto Spartan Sideforms
- Comes in 19.20' lengths



The Spartan™ Capping Removal Tool is a multi-purpose tool designed for the removal of capping, cleaning concrete from sideform and capping, and its unique ball lock rail base helps remove concrete build up. The Capping Removal Tool's molded ball lock rail base also helps pull sideform away from the finished concrete panel.

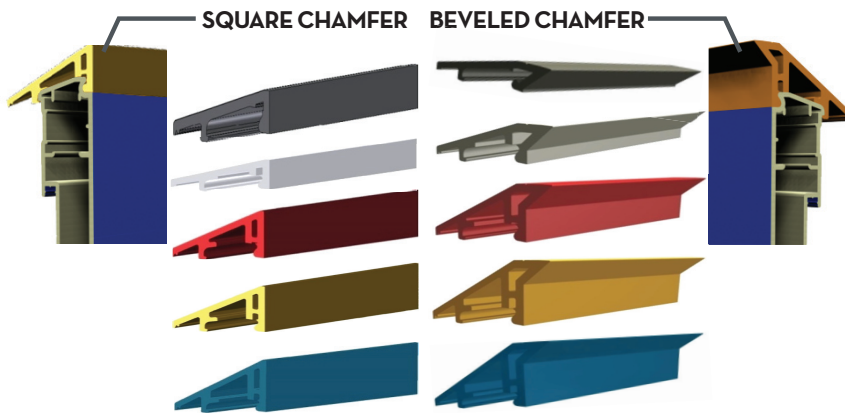
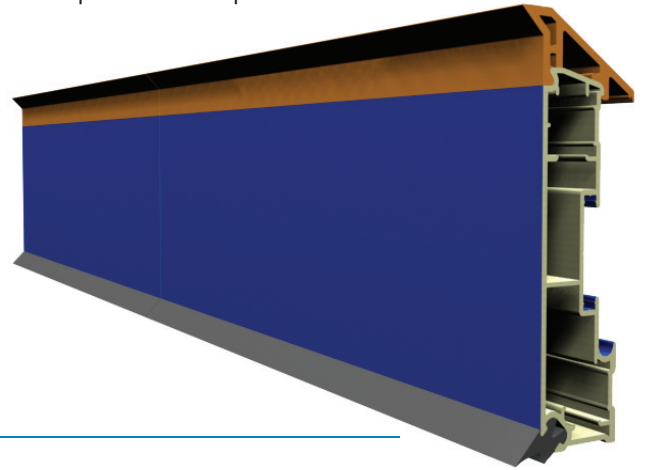


2 Spartan™ Sideform

SIDEFORM FEATURES

- Epoxy powder-coated for easy cleaning
- Magnet securing rail securely holds sideform to magnet
- Available in color-coded 6", 8", 10" and 12" profiles and Standard 19.2 ft lengths
- Significantly lighter than steel formwork reducing any potential occupational safety and health issues
- Thick wall sections - will not easily bend or buckle
- Add joiner plates to make any length
- Center line marking: Spartan™ Sideform provides a horizontal line-of-center to assist with alignment or positioning of fittings

Spartan™ Composite Sideforms are manufactured from ultra lightweight, high-grade 6082 and 6005A aluminum alloys which provides durability and strength. Sideforms consist of composite aluminum with interchangeable chamfer profiles on top and bottom.

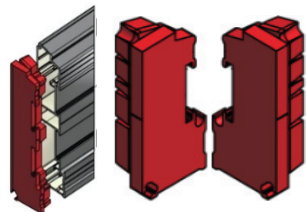
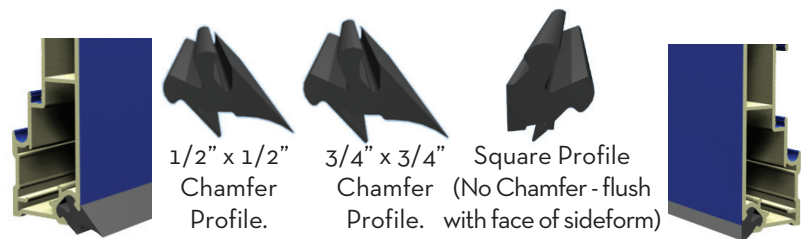


3 Spartan™ Sideform Capping

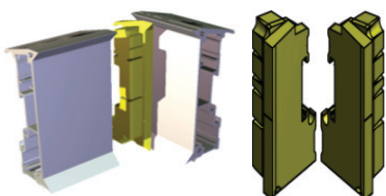
The Spartan Sideform Capping allows the flexibility to change sideform height by simply adding the appropriate side form caps. Caps are available in 1/2" and 1" height increments with 1/2" and 3/4" inch built-in chamfer. The PVC capping easily snaps on and off Spartan™ Sideform.

4 Spartan™ Rubber Base Insert

Provides a caulk-free seal between the bed and formwork to prevent concrete slurry bleed - eliminate the need for caulking and the material and labor costs associated with the silicone application and removal processes.



RED splayed rubber end caps for 6", 8", 10", 12" Spartan Sideform



YELLOW square rubber end caps for 6", 8", 10" and 12" Spartan Sideform

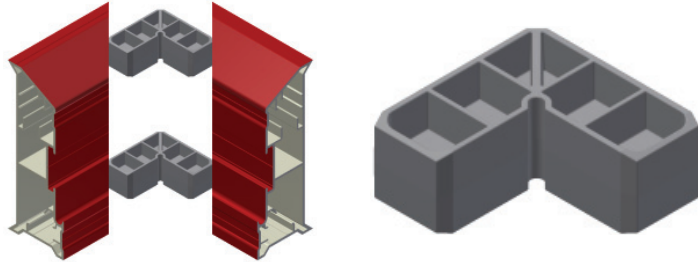
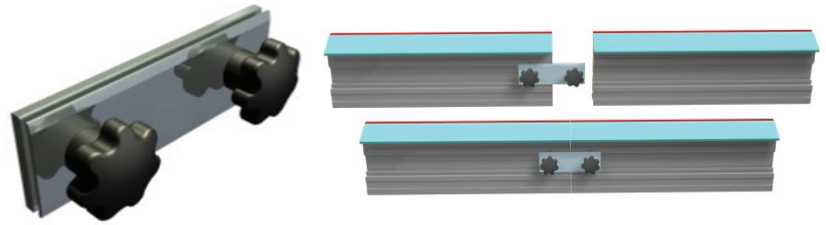
5 Spartan™ Sideform End Caps

RED Spartan™ End Caps provide a caulk-free joint between sideform sections, preventing concrete bleed through gaps in temporarily joined sideforms. These caps fit into the ends of the Spartan Sideform extrusion for sideform to sideform linear connections. Also for use in the ends of internal corner pieces fabricated for Spartan Sideforms. 5° splay helps to provide easy sideform separation during the formwork removal/stripping process.

YELLOW Spartan™ End Caps fit into the ends of the sideform extrusion for perpendicular (90 degree) sideform abutments to form external corners.

6 Spartan™ Joiner Plates

Spartan™ Joiner Plates are used to join sideform sections and used for joining Spartan Internal Corner systems. For 6" to 12" Spartan & Magniform Sideforms.



7 Spartan™ Internal Corner Brace

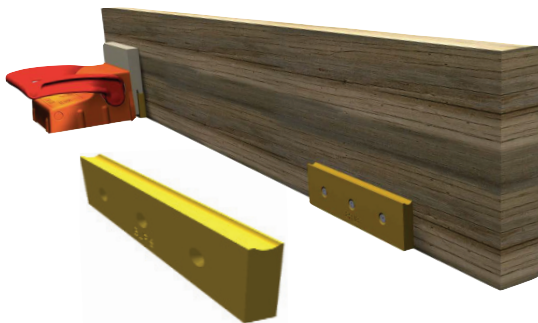
Made for 6" to 12" Spartan & Magniform Sideforms, two Internal Corner Braces are required for each corner unit. Internal corner brace fits into internal joiner guides in Spartan Sideforms to enable 2 sideform pieces cut at 45 degrees to be permanently joined to form an internal corner unit.

OTHER ACCESSORIES

Magnet Storage Rack

Organize and store precast magnets

- Suits both SRB-MX1800 & Titan Handle Magnets
- Stores up to 40 magnets (enough magnets for 2 standard pallet tables)
- Storage basket on top for magnet cover flaps and other tools and auxiliaries
- Castors with brakes to facilitate easy wheeling of storage rack to and from workstation



Ball Lock Rail Strips

Adaptors for wood, aluminum and steel sideforms to accommodate usage with SRB magnets on steel beds.

- Fix to wood or aluminum to adapt for usage with SRB Titan Magnet Clamps for simple downward motion engagement of magnets to sideforms
- Comes pre-drilled for simple fitting to wood, plywood, aluminum or other formwork available in 8" nylon lengths. Can be bolted, riveted, screwed or welded depending on needs

Screw Fix Bracket

- Alternate formwork fixing method to magnets, and fixing method for FIXED-END Sideforms
- Bracket is screw fixed or bolted to casting table, wood or concrete casting surfaces
- Bolts Supplied



Exclusive North American Distributor

402-341-2080 | www.nox-crete.com

nox-crete®

chemical solutions to concrete problems