

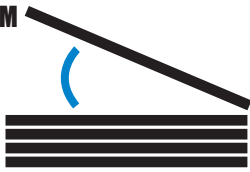


chemical solutions to concrete problems



# PANELWARE™

**TILT-UP STACK CAST FORMWORK SYSTEM**



# HOW IT WORKS



The Panelware Formwork System™ is an innovative and sustainable tilt-up formwork system for stack casting panels. Panelware enables contractors to simply and easily form and pour multiple tilt-up panels onsite with reusable components and minimal to no waste. Panelware also allows panels to be formed with a higher degree of accuracy with a substantially lower cost when compared to traditional tilt-up forming methods.

Panelware consists of aluminum rails and components, allowing for many years of constant use, which makes Panelware more cost effective than using traditional wood formwork methods and ensures far greater accuracy & quality of production.

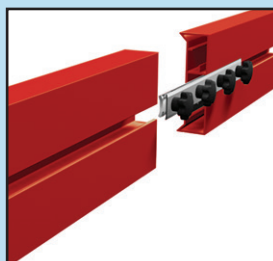
With this unique “climbing formwork” system the amount of formwork required to cast a stack of panels is far less than any other system or method, saving substantial costs in transportation, storage and handling of equipment.



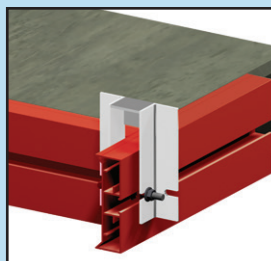
Panelware is simple to use and consists of just **5 MAIN COMPONENTS**, which are lightweight, compact and can be assembled and disassembled easily.



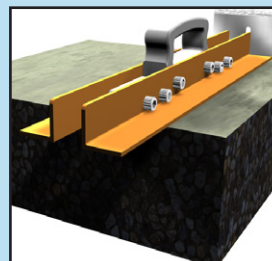
**FORMWORK  
BRACKET**



**SIDEFORM JOINER**



**CORNER BRACKET**



**MAGNETIC  
SUSPENDER TOOL**



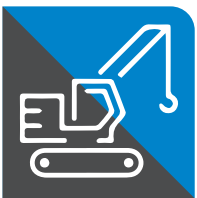
**SIDEFORM**



# WHY CHOOSE PANELWARE?



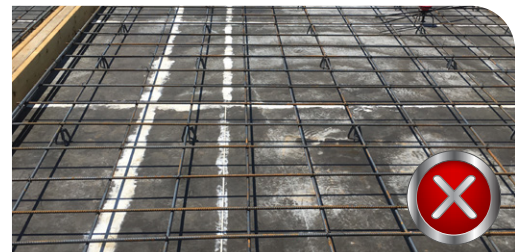
NO **LUMBER** REQUIRED



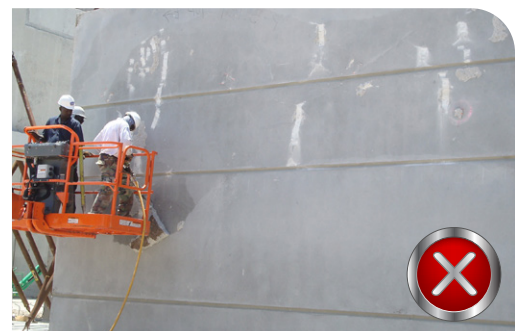
FEWER **CRANE** MOVES



FLAWLESS **FLOOR** SLAB



ELIMINATES **PANEL FACE**  
IMPERFECTIONS



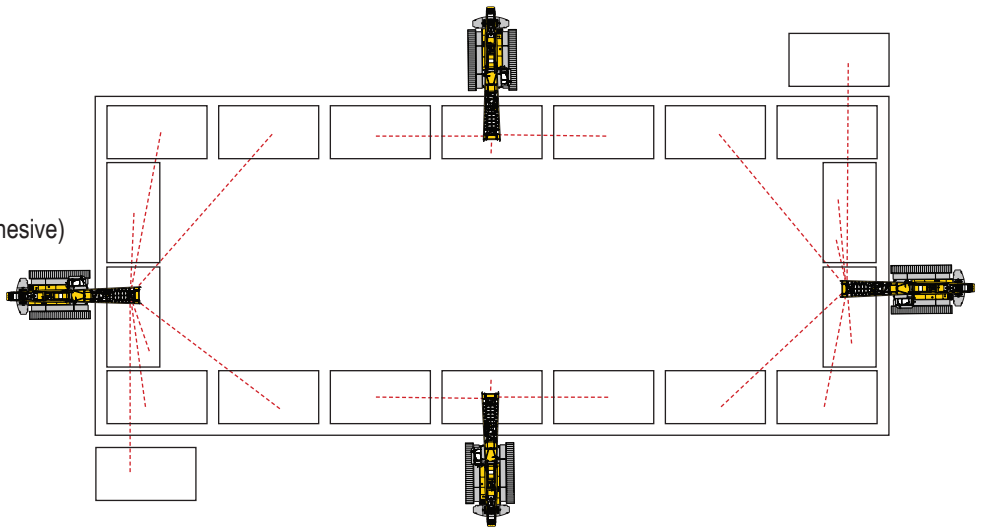
CONCRETE **PUMPING**  
NOT REQUIRED



# THE DIFFERENCE

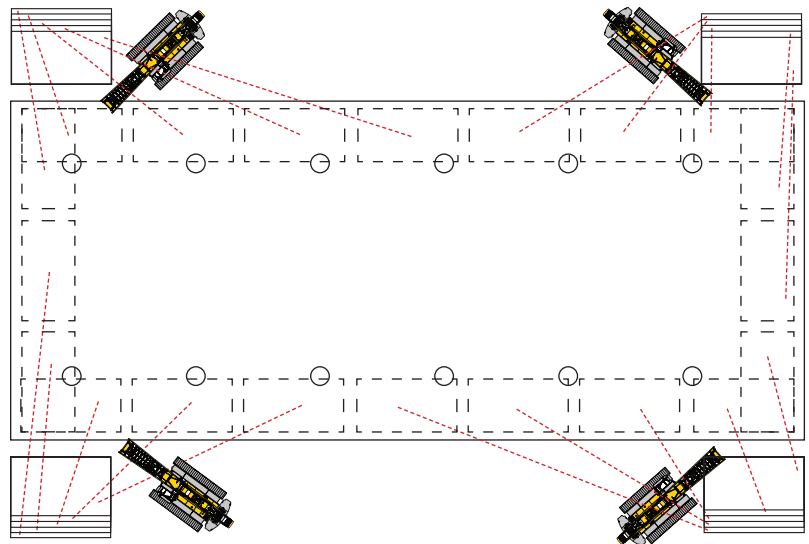
## Traditional Casting Slab

- Pour floor slab (cure, bondbreaker)
- Set wood formwork (drill holes, glue, clean adhesive)
- Perform saw cutting, fill materials afterward
- Pour and erect panels (multiple crane moves)
- Repair slab
- Clean slab
- Apply densifier (when applicable or spec'd)
- Rub, patch, powerwash / clean



## Panelware

- Pour waste slabs
- Set Panelware Forms (*reusable*)
- Build pad under construction (set steel columns etc.)
- Pour panels / stack cast
- Erect panels
- Pour floor (*no heavy cleaning, patching/filling*)
- Apply densifier (when applicable or spec'd)
- Rub, patch, powerwash / clean



## Panelware

ALTERNATIVE  
TILT-UP SITE LAYOUT

