



TIGERLOCTM PLUS

CLASS A RATED - FIRE BLOCKING
WINDOW & DOOR ATTACHMENT EMBED

PRODUCT DATA SHEET

HOW IT WORKS

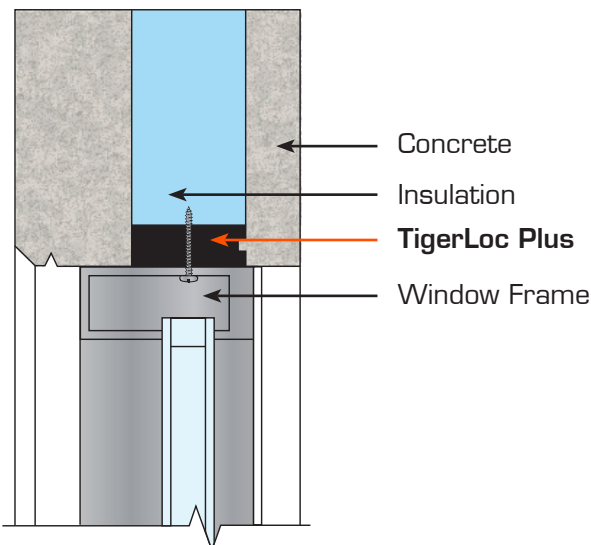
TigerLoc Plus is a revolutionary new Class A fire rated attachment embed for precast and tilt-up concrete buildings. Unlike dimensional lumber, it will not absorb water and will not rot, twist or warp. Additionally, unlike treated wood, TigerLoc will not react chemically with aluminum window frames or fasteners.

APPLICATIONS

- + Use on overhead door openings, panel edges/insulation caps, window openings, mandoor openings and more.

ADVANTAGES

- + **Safety**—Class A Rated - fire blocking window & door attachment embed that is in compliance with ASTM E-8421a (Surface Burning Characteristics of Building Materials).
- + **Durability**—Will not rot or corrode fasteners, which minimizes the need for building maintenance and repairs.
- + **Quality**—Provides properly constructed details that ensure efficiency and superior building performance.
- + **Efficiency**—Provides faster on-site installation.
- + **Save Energy**—Improves energy performance of building envelope.
- + **Save Time**—Installs quickly and accommodates fast installation of door and window frames with no pre-drilling.
- + **Save Money**—Streamlines site installation time, and lowers building energy operating costs.



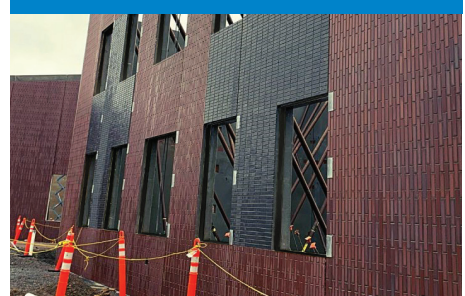
USE INSTRUCTIONS

- + TigerLoc Plus is designed for simple and quick installation, as it can be easily cut and installed with standard tools found on any construction site.

CONCRETE FLOWS INTO THE GROOVE
SECURING TIGERLOC PLUS TO THE PANEL



TIGERLOC PLUS SECURED INTO THE
CONCRETE PANEL



DOOR & WINDOW FRAMES FASTEN
SECURELY ONTO TIGERLOC PLUS



chemical solutions to concrete problems

TECHNICAL DATA

TYPICAL PHYSICAL PROPERTIES	Nominal Value	Units	ASTM Test Method
Melt Index	0.80	g/10 min	D 1238
Density	0.960+	g/cm ³	D1505
Tensile Strength @ Yield	4,600	psi	D 638
Elongation @ Break	>600	%	D 638
Coefficient of Linear Thermal Expansion	6 x 10 ⁻⁵	In./in./°F	D 696
Flexural Modulus	225,000	psi	D 790
Tensile Impact	120	ft-lb/in	D 1822
Low Temperature Brittleness F ₅₀	<-76	°C	D 746
Heat Deflection Temperature @ 66 psi	82	°C	D 648
Maximum Service Temperature, Air	180 F		Long Term
Vicat Softening Point	129	°C	D 1525
Hardness, Shore D	69		D 2240
Water Absorption	MAX 0.01%		D 5709 (2)
Flammability Rating	UL94 HB		
Flame Spread Index	10		E84-21a
Smoked Developed Index	25		E84-21a
Compressive Strength	2,601	PSI	D 695
Puncture Impact Energy	193 ft lbf	lbf	D3763
Screw Holding Capability	1,300 ft lbs	ft lbs	D1761
Thermal Resistance	2.84	(m.k/W)	C518
Compliances	NFPA 285, FDA, USDA		

* These are standard values which apply to an average density. Small variations on the thickness of the pieces are not excluded.

AVAILABILITY AND TECHNICAL SERVICES

In addition to corporate offices in Omaha, Nebraska, Nox-Crete Inc. maintains regional offices and distribution centers in major markets around the world. For source or technical information, call 800-669-2738 or 402-341-2080.

LIMITED WARRANTY

WARNING-READ CAREFULLY

TERMS OF SALE

NOX-CRETE offers this product for sale subject to, and Buyer and all users are deemed to have accepted, the following terms of sale and limited warranty which may only be varied by written agreement of a duly authorized corporate officer of NOX-CRETE. No other representative of NOX-CRETE is authorized to grant any warranty or waive the liability limit set forth below.

LIMITATION OF WARRANTY

NOX-CRETE warrants this product to be free of manufacturing defects. If the product when purchased was defective and was within the period of use indicated on the carton or carton, when used, NOX-CRETE will replace the defective product with new product at no charge to the purchaser.

NOX-CRETE MAKES NO OTHER WARRANTIES, express or implied, with respect to this product. THERE IS NO WARRANTY OF MERCHANTABILITY. In no case shall NOX-CRETE be liable for any special, indirect or consequential damages resulting from the use or manipulation of the product and no claim of any kind shall be greater in quantity than the purchase price of the product in respect of which damages are claimed.

INHERENT RISKS

NOX-CRETE MAKES NO WARRANTY AS TO THE PERFORMANCE OF THE PRODUCT AFTER APPLYING BY THE PURCHASER AND THE PURCHASER ASSUMES ALL RISKS ASSOCIATED WITH THE USE OR APPLICATION OF THE PRODUCT.



chemical solutions to concrete problems

402-341-2080 • www.nox-crete.com